

Hi all,

At the meeting on 5th June I offered to help collate the shortlisted rehab projects into a more formal document that could be presented to Tim Longstaff of the Wandle Trust before visiting the site. Here is the first draft of the report. Sorry it's taken so long.

Hopefully the report is clear and easy follow, but if not please let me know and feel free to suggest improvements. This is just a first stab, and I'd really like your thoughts.

I have given each of the three sites a simple description and summarised the key principles of the proposed work. I have included some rough plans and sections for each site in Appendices at the back of the report.

I've have used the proposals that were uploaded to Dropbox as the starting point, but rehashed some of the wording to fit into the report template. I hope I have interpreted your ideas correctly.

I'm sure there are millions of spelling mistakes, bad grammar and poorly worded sentences, but I just want to get you all something to comment on. Again, feel free to point these out.

Please send me an email with your comments or any extra information you think should be added or you can use the comment function on Dropbox.

Happy reading!

Nicky

nicola_keen@hotmail.com

Wandle Trust River Rehab

Initial Site Proposals
DRAFT

June 2015

Rehab-RE-01



Contents

1. INTRODUCTION..... 1

2. KEY OBJECTIVES 1

3. THE SITES 2

4. RICHMOND GREEN 4

5. PLOUGH LANE TO TREWINT STREET 5

6. KING GEORGES PARK, INCLUDING EARLSFIELD 8

7. SUMMARY..... 10

APPENDIX A - RICHMOND GREEN

APPENDIX B - PLOUGH LANE – TREWINT STREET

APPENDIX C - KING GEORGES PARK

1. INTRODUCTION

- 1.1. This report has been prepared by the Wandle Trust River Rehab Volunteer Team and sets out draft proposals for potential project sites.
- 1.2. A meeting was held on 5th June 2015 to review initial project ideas and potential sites that had been identified by members of the Volunteer Team. Each idea was discussed in turn with the intention to reducing the number of potential sites to a shortlist of three or four, which could then be researched in more detail and review.
- 1.3. The shortlisted sites will be visited by members of the Volunteer Team with Tim Longstaff of the Wandle Trust, and the feasibility of each site assessed.

2. KEY OBJECTIVES

- 2.1. At the meeting, in addition the main aim to improve flow diversity of the river, two further objectives were identified, which could be applied to any project sites, regardless of which location(s) are finally selected.

Objective 1 – Improved Access

- 2.2. There are many sections of the Wandle where access is restricted and it is not possible to see the river or get close to it. Providing better access to the river would:
 - Allow members of the public to engage with the river more and as a result take better care of it;
 - Make it easier for Wandle Clean-up crews to reach the river for clean-up events
- 2.3. Where safe and practicable, opportunities to remove railings which prevent access to the river should be explored. This may be as part of the main rehab project works or as standalone projects, independent of the rehab project funding.
- 2.4. It was suggested that the scrap value of the railings could potentially pay for the cost of their removal.

Objective 2 - Water Voles

- 2.5. The River Wandle Catchment Plan outlines the long term aspiration to reintroduce Water Voles to the Wandle. The Wildlife Trust has been working on this for around 10 years. A Water Vole friendly

back water has been created in Poulter's Park and other sites potential have been identified by the Wildlife Trust for future improvement. A number of potential Water Vole habitats are required along a river before the animal can be reintroduced.

- 2.6. Where appropriate, opportunities to create conditions that are favourable to water voles should be sought. This would be particularly pertinent to sites where it is proposed to change the flow of the river and create backwaters.

3. THE SITES

3.1. The majority of the 47 proposed projects listed in the Wandle Trust's/SERT's Catchment Plan as either ongoing or proposed for the future are focussed on upstream sites. To date there has been no habitat improvement work has been carried out by The Wandle Trust downstream (i.e. north of Plough Lane, Wimbledon CHECK LOCATION).

3.2. The shortlisted projects fall into three broad areas:

- Richmond Green
- Section of River between Plough Lane and Trewint Street
- King Georges Park

3.3. The three potential site areas are described below, from upstream to downstream, and locations are illustrated in Figure 1. Where appropriate, illustrative sketch plans, sketches and additional background research are included within the Appendices.

3.4. An aspirational project to deculvert the river at Croydon was also discussed. It was felt that this project would be too ambitious at this stage for the Wandle Rehab Team, but could be a longterm goal.



Figure 1 Site Locations

4. RICHMOND GREEN

Site Location

- 4.1. The site is located on the section of river between Beddington Lane (B272) and Purley Way (A23), to the west of Waddon Ponds in Croydon. The river flows from east-to-west in this area.



Figure 2 Richmond Green site location

Site Description

- 4.2. Richmond Green an area of open space overlooked by bungalows run by Sutton Council for old people. The site is not narrowly constrained by industry, housing, or roads, which provides an opportunity to create a more natural aspect. This is often not possible in other sections of the river where development is close to the river edge on both sides.
- 4.3. The London Wildlife Trust has carried out some work already in this area, at Wandle Bank and between Wandle Bank and Wandle Road (myco filters, possibly, POLLY TO CONFIRM).
- 4.4. The proposed site is approximately 400m (440yd) long and stretches between the Purley Way Retail Park and Wandle Road. The river forks approximately 100m (110yd) to the east of Wandle Road where a weir once diverted the southern branch of the river to power a mill. This area has been recently redeveloped, with the Mill converted to flats, and new houses have been built fronting onto Bridle Path. There is still some ongoing construction in this area.

4.5. To the east of the weir the river is flat and shallow. It is 4-5m (4-5.5yrd) wide and very straight, with timber toe boards to both sides. The south bank is wooded and quite steep, and in some places very overgrown. The north side is flatter and consists of mown grass. A footbridge is located around 150m east of the weir and links Richmond Green to Lavington Road. There are small fish in this stretch of river and kingfishers and herons are often seen here.

Proposal

4.6. The proposals for this area would seek to:

- Remove wooden toe boarding
- Re-grade the bank and create wetland edge
- Create conditions suitable for water voles
- Increase flow diversity with coir rolls and woody debris
- Engage with local residents and encourage their participation in the works, or to enjoy the improved access to the river subsequently.

4.7. Refer to Appendix A for sketch plan and sections.

Constraints and Opportunities

4.8. There are no obvious drawbacks with this project. The work could be carried out by volunteers and would not require expensive contractors or substantial earthworks.

4.9. The site offers a good opportunity to engage with local people and improve access to the river.

5. PLOUGH LANE TO TREWINT STREET

Site Location

5.1. The site covers an approximately 1000m (1100yd) long section of river between Plough Lane, Wimbledon and Trewint Street, Earlsfield, see Figure 3. The river flows from south to north in this area. The long stretch of river offers an opportunity implement a series rehab schemes in this area.

5.2. A large scale project has also been proposed, located approximately 200m (220yr) upstream (south) from the weir at Trewint Street, opposite the Garratt Lane allotments. This project could be the 'main' project for the volunteer team in this site, with the smaller schemes also included as later works to supplement it. The 'main' site is illustrated by Figure 4.

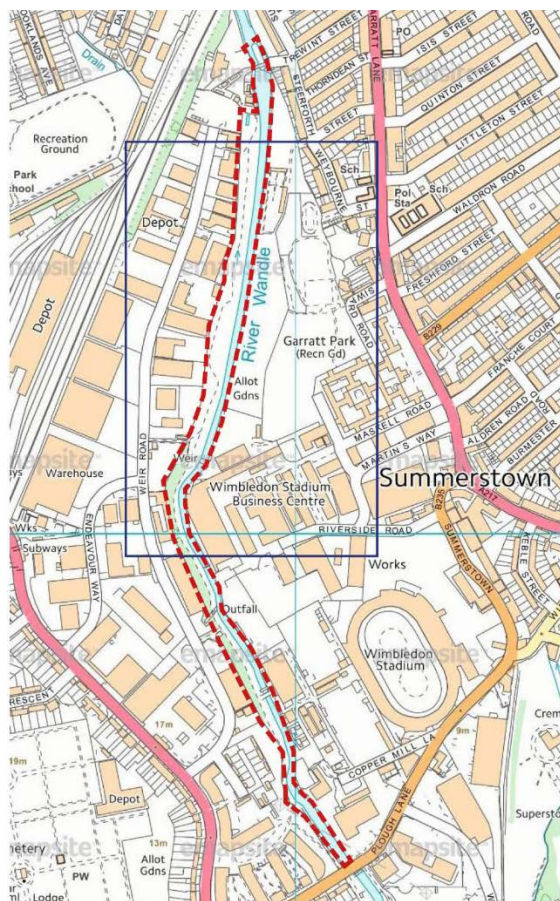


Figure 3 Plough Lane-Trewint Street site location

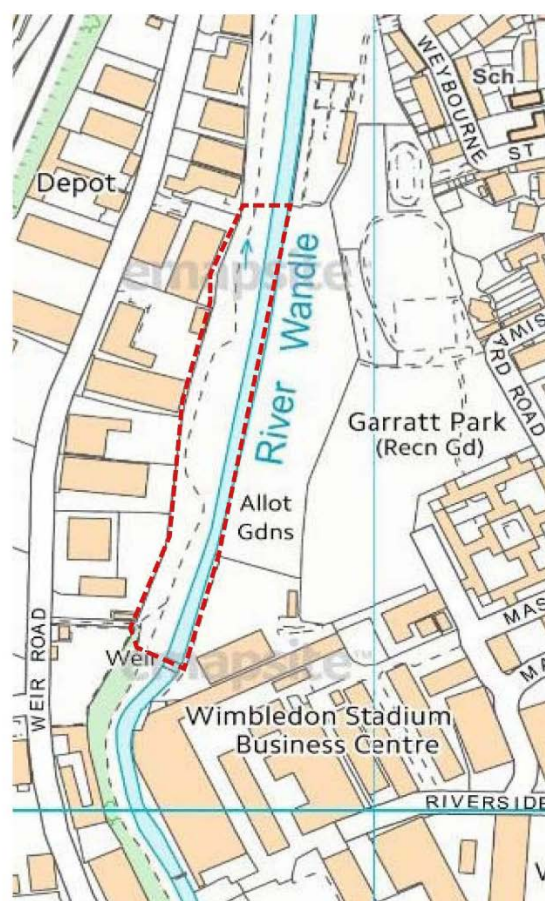


Figure 4 Proposed main project area

Site Description

- 5.3. This section of river is typified by metal and concrete revetments, meaning that water level is up to 1.5m lower than adjacent ground. The site includes two weirs, one by Wimbledon Stadium Business Centre and the second close to Trewint Street bridge. The east side of the river is lined by industrial development and the Garratt Park allotments (opposite the main project area). The west side is more open and there is 10 to 35m between the river and the boundary with adjacent industrial development. The Wandle Trail, a 2m wide resin bonded footpath/cycleway, runs along the west side of the river. The Trail was widened and surfaced by Sustrans in summer 2014 to improve non-vehicular connectivity between Earlsfield and Wimbledon.
- 5.4. The route of the Trail has been informed by the topography the river corridor. To the north of Plough Lane, where the ground is relatively even, the Trail generally runs parallel with the river some 10m away from the edge. The Trail becomes more meandering between the two weirs where the topography is more varied and there is up to 25m between the path and river in some areas. There is a natural dip in this area which becomes a pond during prolonged wet weather but is dry in summer months. The path is slightly proud of the adjacent ground level which prevents overland flow and creates wet areas between the path and the river.

5.5. The west side of the river is heavily vegetated with many mature trees (Willow and Poplar are common species) at the river's edge. Some of these trees have failed in recent years and now hang down into the river. The vegetation consists mostly of nettles, bramble, elder and cow parsley. Some areas of Japanese Knotweed have also been identified close to the Plough Lane end of the site. There is little or no vegetation within the watercourse itself.

Proposals

5.6. There are a number of potential projects which could be carried out on this section of the river. The proposals range from small scale interventions within the existing channel to more ambitious projects which would involve reprofiling of the sides of the river. If this section of river were chosen for the Rehab Project a combination of the proposals could be implemented in a staged approach.

5.7. Small scale interventions that could be implemented at one or more locations along the river:

- Flow deflectors to be installed within the channel to modify flow;
- Damaged metal revetments removed;
- Over-mature trees to be pollarded and/or selectively removed to improve access/views of the river;
- Devise a strategy for discouraging fly-tipping into the river, which may include installation of new railings/repair of existing railings and fences.
- Use existing industrial features within the river corridor, such as the old iron bridge type structure over the river about 100m north of Plough Lane, to enhance the experience of walking/cycling along the river and enable people to engage with the industrial past of the Wandle.

5.8. The larger scale project or 'main' project seeks to reprofile area on the west side of the river. The proposal would seek to:

- create a pond, or network of ponds and wetlands between the Wandle Trail and the river. The ponds may be on or off line;
- remove palette boards and add in natural meanders using coir rolls or wooden debris and planting of native species to secure it.

5.9. Refer to Appendix B for existing site photographs, sketch plans and sections.

Constraints and Opportunities

- 5.10. The site offers a number of opportunities and the variety of project types which could enable the volunteer group to use a phased approach to rehabilitating this part of the river corridor. This could mean that additional sources of funding could be sought to supplement that available for this project.
- 5.11. The 'main' project would initially require construction work that could not be done by volunteers, which would potentially make this project very expensive. However, it is understood that a new pond area was intended to be created as part of the work by Sustrans to improve the Wandle Trail, but this has not been implemented. Failure to complete the pond could be an opportunity for the volunteer team to work in partnership with Sustrans to complete the pond and acquire more resources/funding for doing so.
- 5.12. It is possible that further investigations by Sustrans found that the creation of a new pond in this area was not feasible, which would mean that the 'main' project may not be achievable either. Further research is required.
- 5.13. This site location provides an opportunity to engage local people with the industrial past of the Wandle and introduce the Wandle to the current industries that use the surrounding area.

6. King Georges Park, including Earlsfield

Site Location

- 6.1. The proposed site is located on the west bank of the river in the southern part of King George's Park, Southfields, between the footbridges leading to Lydden Road and Wandle Way.

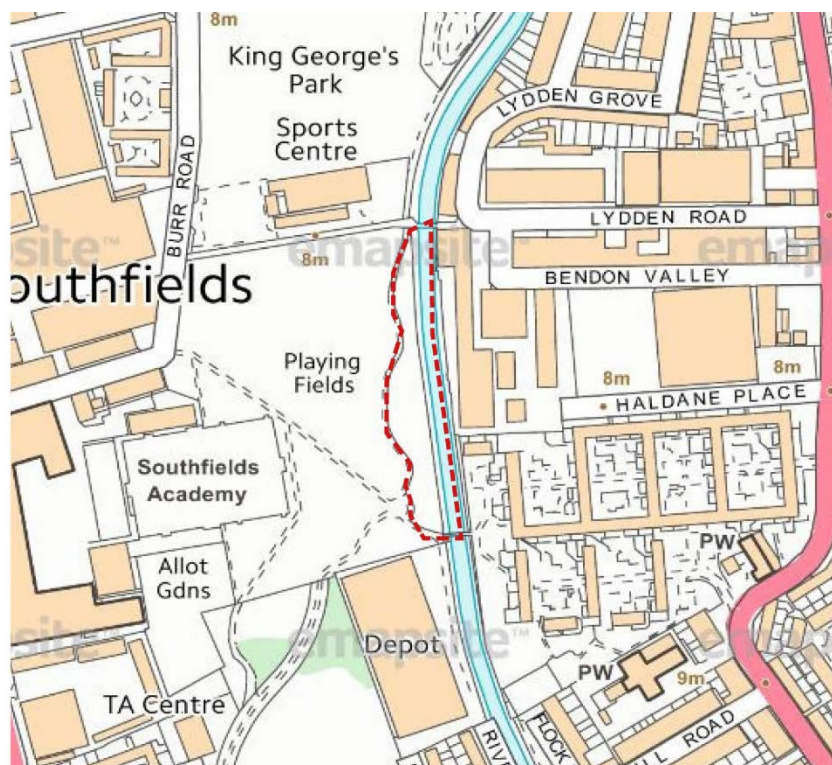


Figure 5 Richmond Green site location

Site Description

- 6.2. River is within a concrete channel with a uniform profile. There is some vegetation growing over the sides but limited wildlife habitat. The river is separated from the park by a 1.8m high railing and intervening vegetation which prevents access and views to the river.

Proposal

- 6.3. The proposals for this area would seek to:
- Remove concrete on the west side of the river to widen the channel and create a more natural profile with a backwater/planted shelves;
 - Remove railings and coppice/remove some existing trees and vegetation (if appropriate) to provide access to the riverbank and create a stronger link with the park;
 - Replant with native species to restore/enhance habitat;
 - Use coir rolls on east side of river where concrete would remain.
- 6.4. Refer to Appendix C for existing site photographs, sketch plans and sections.

Constraints and Opportunities

- 6.5. The project would initially would require a lot of heavy construction work that could not be done by volunteers, and could therefore make this project very expensive.
- 6.6. The removal of railings adjacent to an area of open space which is used as a kickabout area could be considered a 'risk'. A risk assessment would be required (as with all projects) to ascertain the hazards and proposals to mitigate any residual risks implemented.
- 6.7. The site offers an opportunity to implement an improvement to the downstream channel where there has been little work so far and would provide an opportunity for users of the recreation grounds to engage with the river and associated habitats.

7. SUMMARY

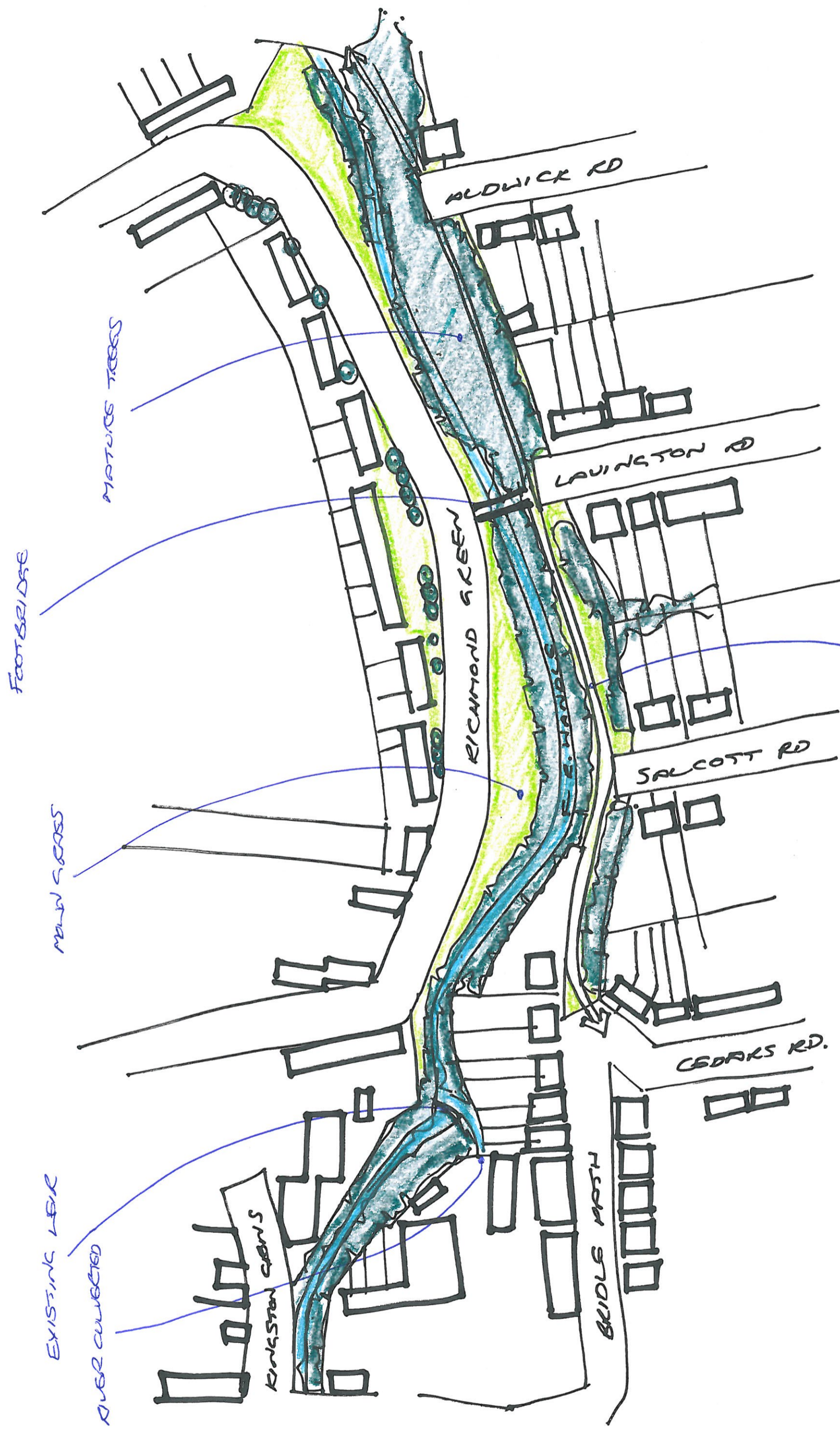
- 7.1. Three sites have been put forward offering different opportunities to improve the River Wandle. The first site described, Richmond Green, is located upstream and seeks to remove existing toe-boarding and modify the channel to enhance the water flow.
- 7.2. The second site covers a long stretch of the river between Plough Lane and Trewint Street. The site offers a chance to create a pond adjacent to the existing channel, which could be on or offline and would enhance the riparian habitat of the area. A number of smaller scale works are also proposed to supplement (or instead of) this main project to improve the river banks, modify flow and engage with users of the Wandle Trail.
- 7.3. The final site is adjacent to King Georges Park in Southfields and is most downstream of all proposed sites. The proposal aims to remove existing barriers to the river and reprofile one of the banks to create a backwater and add new marginal planting to channel.
- 7.4. All three of the propose sites aim to increase public access to the river and to restore, create or enhance existing wildlife habitats both within the river channel and adjacent banks.

APPENDIX A

RICHMOND GREEN

Existing Layout
Proposal Layout
Sketch Sections

DRAFT



FOOTBRIDGE

MATURE TREES

MAIN GRASS

EXISTING LEAK
OVER COLLECTED

KINGSTON GREENS

RICHMOND GREEN

ALDWICK RD

LAVINGTON RD

SALCOTT RD

CEDARS RD.

BRIDLE PATH

BRIDLE PATH
(FROM)



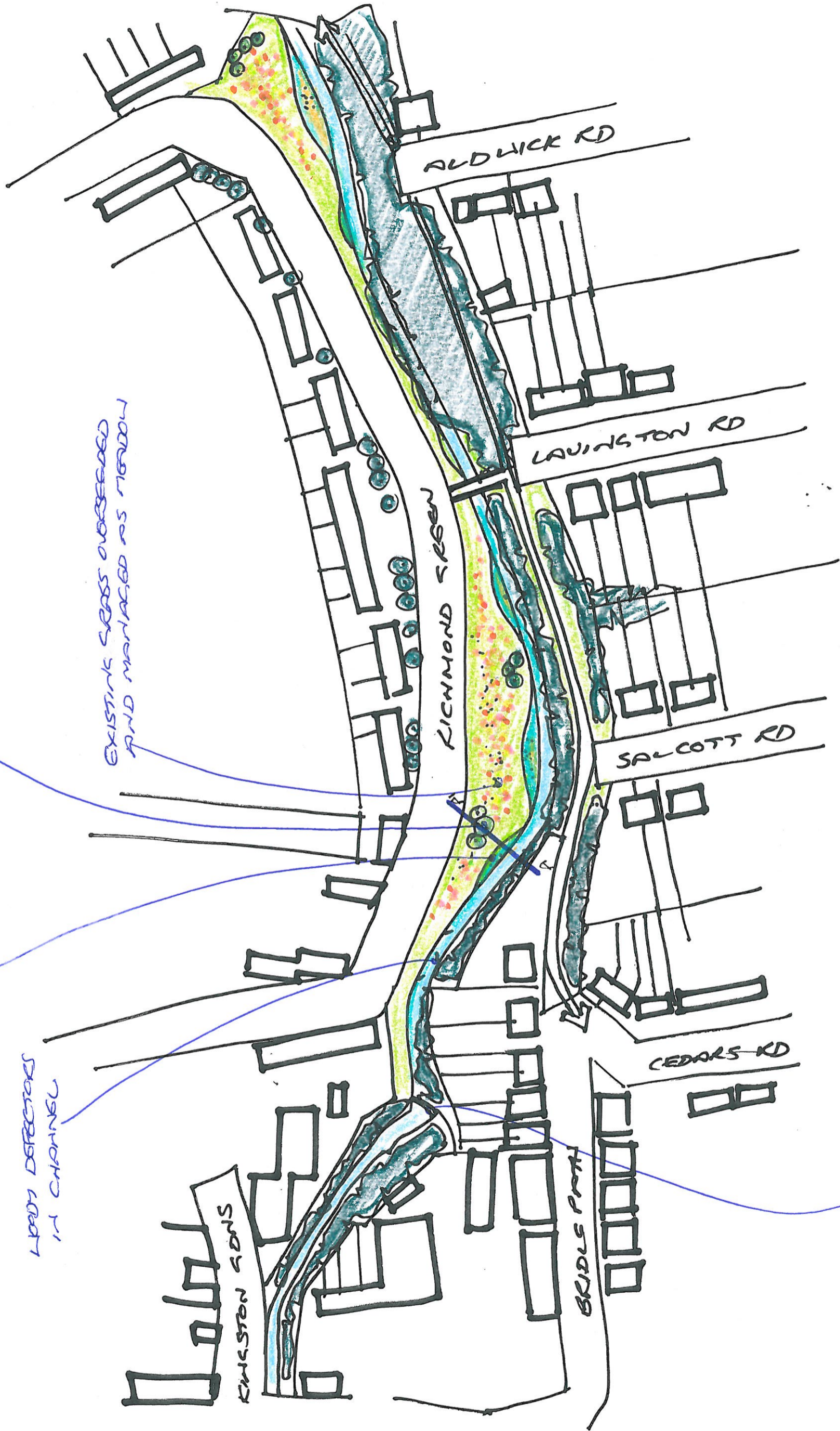
EXISTING LAYOUT

TOE BOARDING REMOVED AND
RIVER WIDENED TO
CREATE BACKWATERS
WITH MARGINAL PLANTINGS

LADY DEFLECTORS
IN CHANNEL

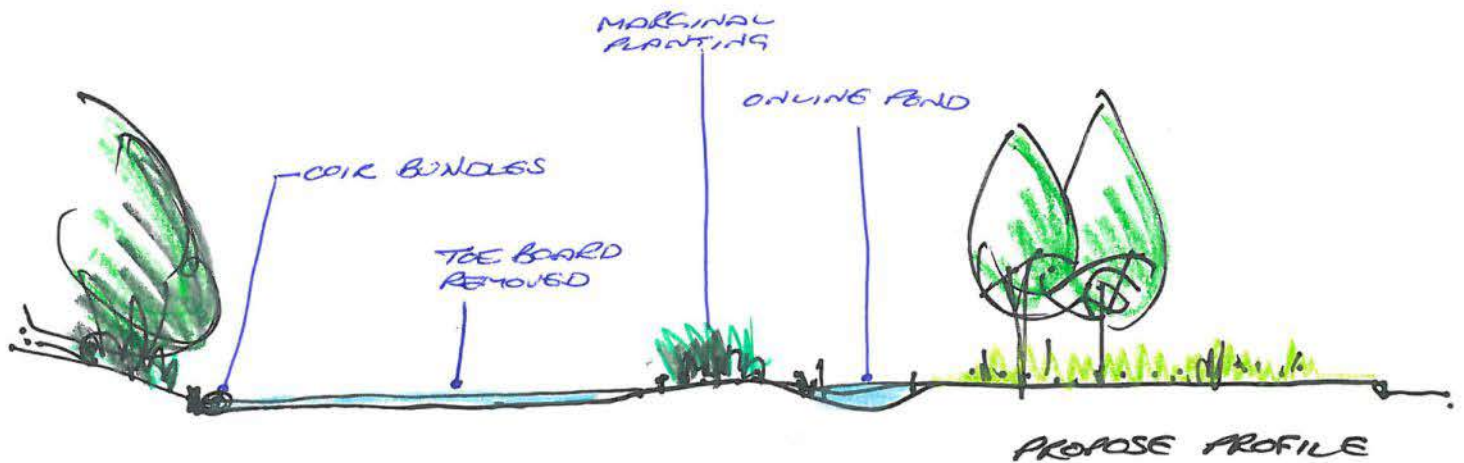
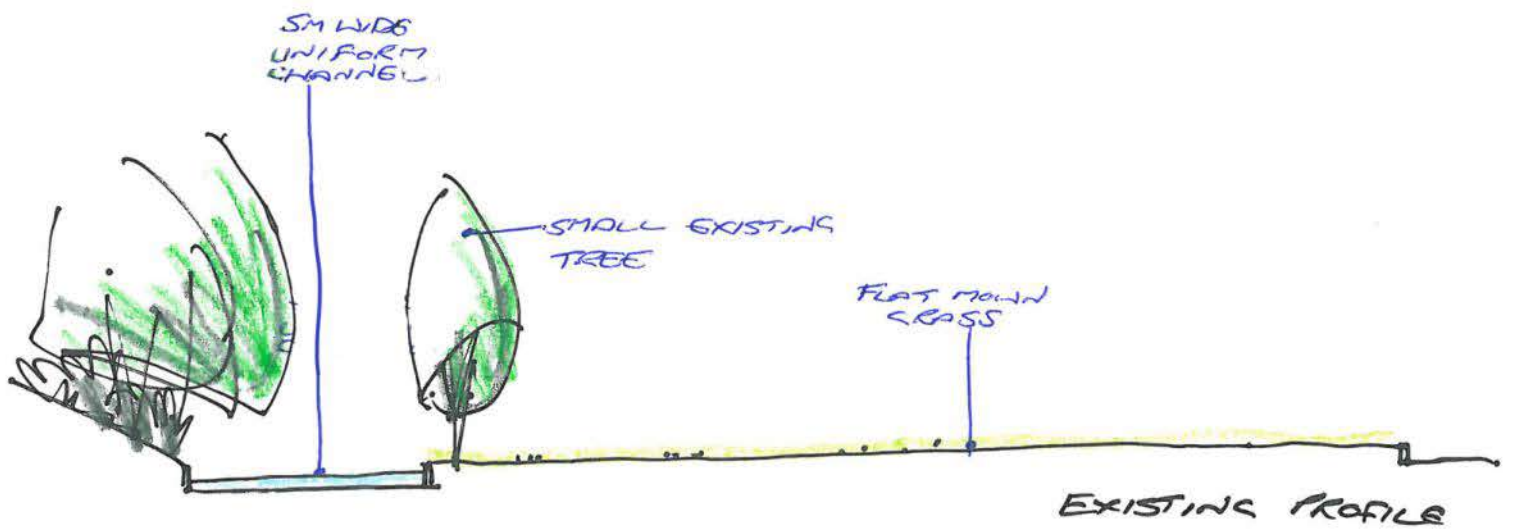
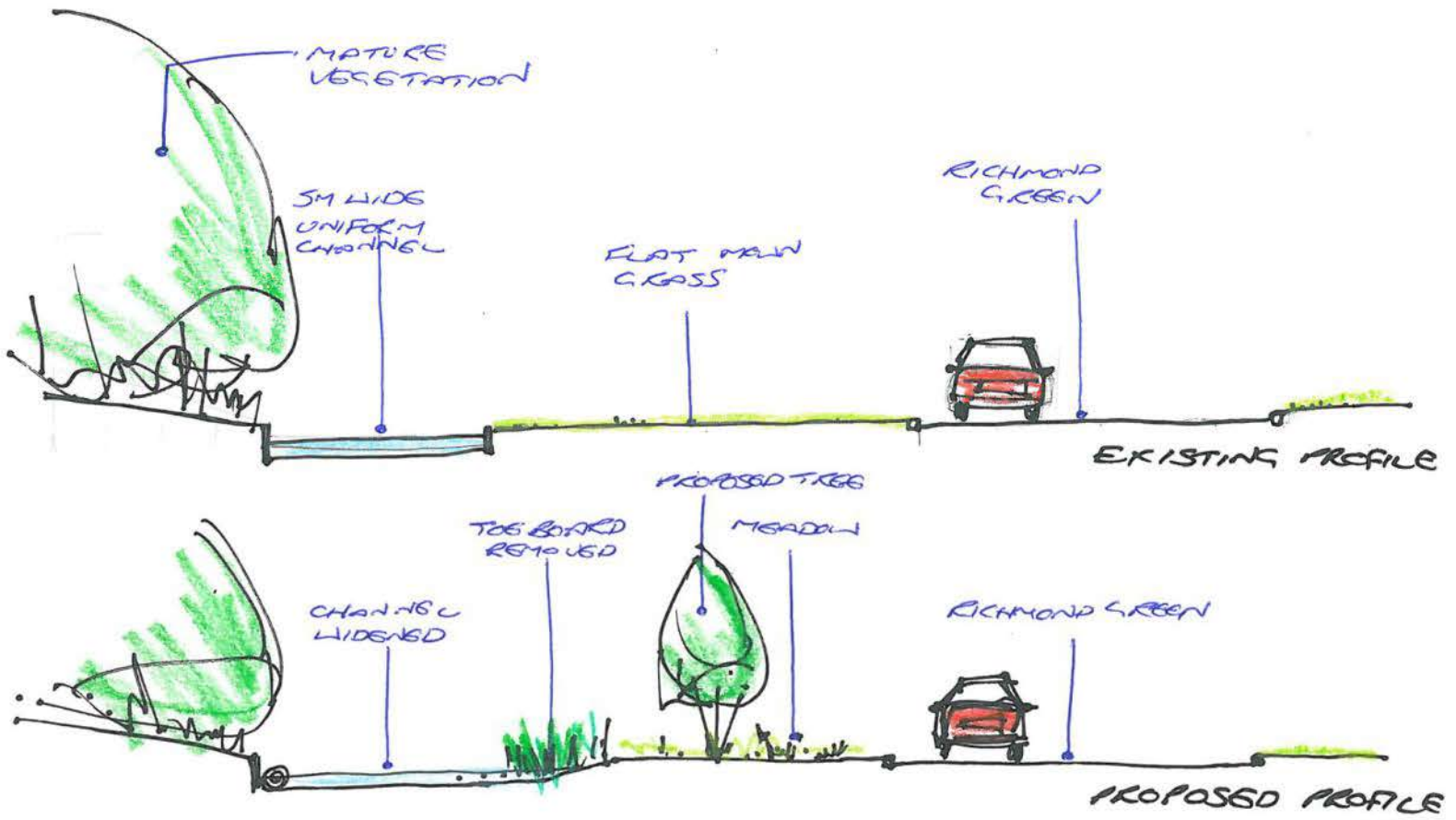
NEW TREE PLANTINGS

EXISTING GRASS OVERSEEDED
AND MAINTAINED AS MEADOW



POTENTIAL TO
REMOVE LEIK

PROPOSED LAYOUT



APPENDIX B

PLOUGH LANE – TREWINT STREET

Existing Layout (main project)

Proposal Layout (main project)

Sketch Sections (main project)

Additional research into Sustrans proposals

DRAFT

MATURE TREES

WIDE SPACE BETWEEN RIVER AND TRAIL

WATER ROAD

WANDER TRAIL

WANDER TRAIL

RIVER

ALWAYS

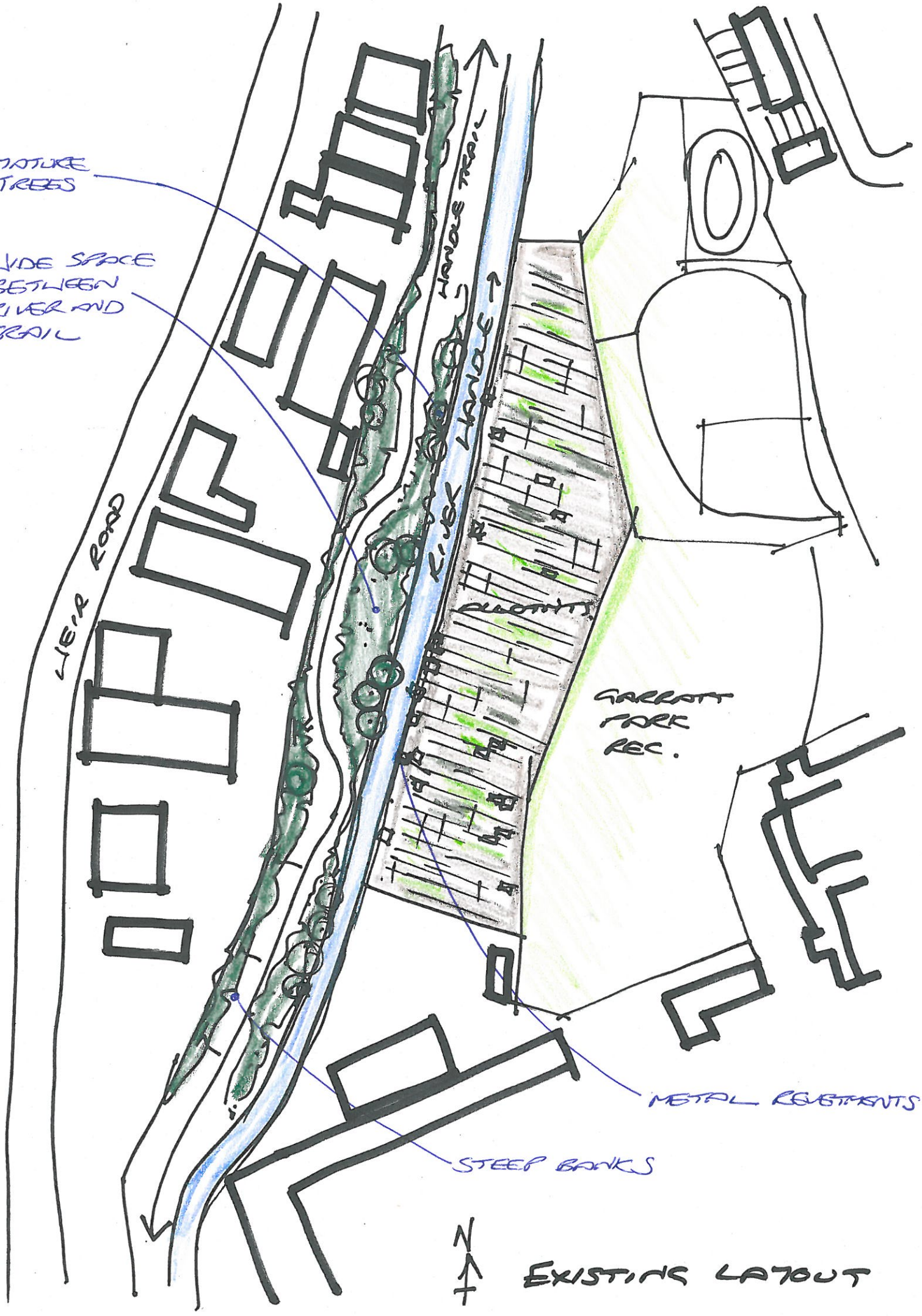
GARRATT PARK REC.

METAL RESTRAINTS

STEEP BANKS



EXISTING LAYOUT



COIR BUNDLES WITH PLANTING

PROPOSED ON/OFF LINE PONDS

LEIK ROAD

WIND TUNNEL

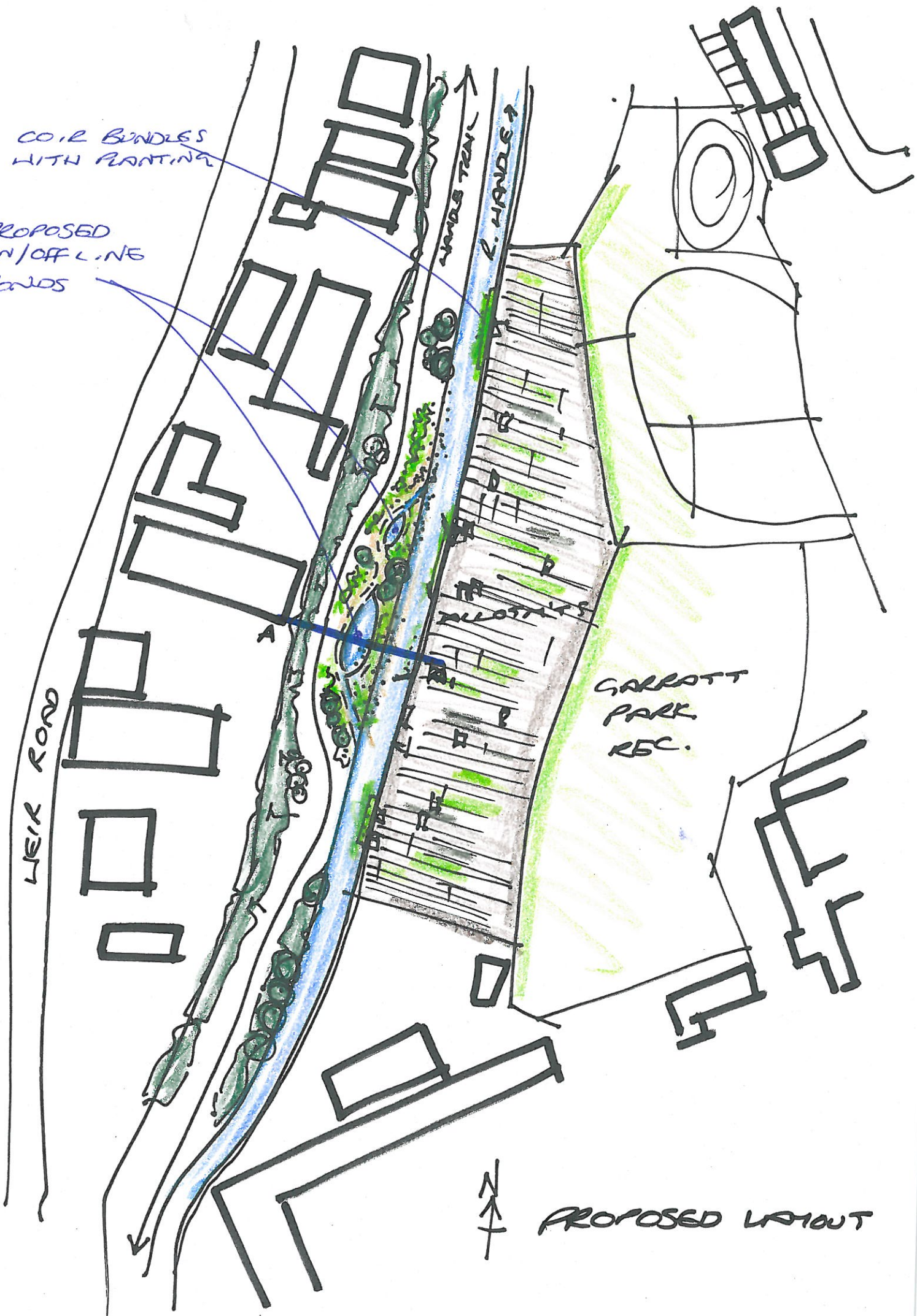
R. HANDLE

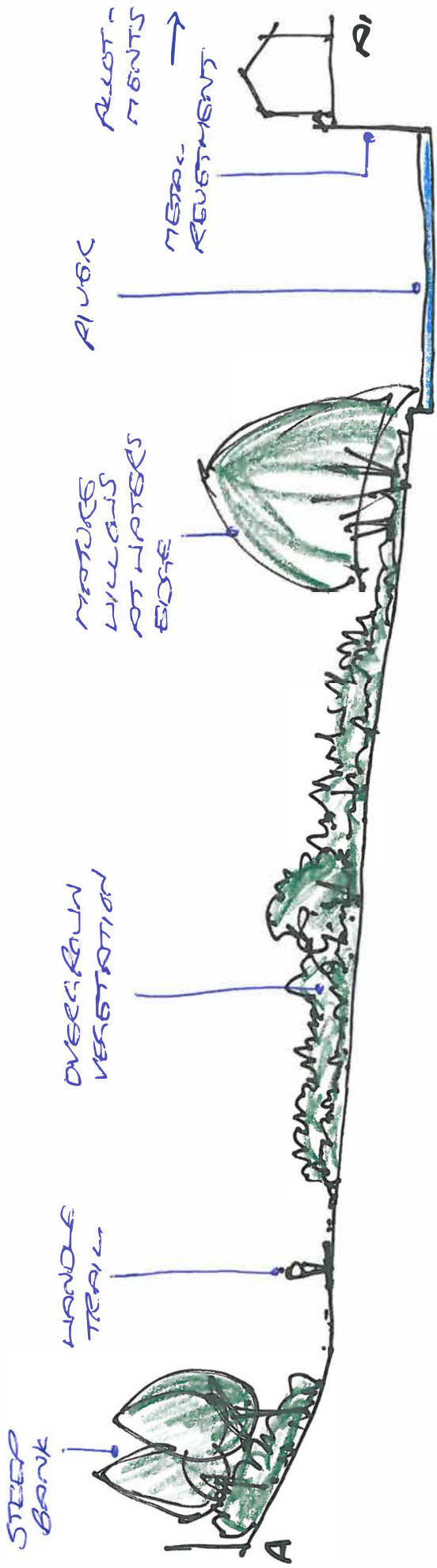
ALLOTMENTS

GARROTT PARK REC.

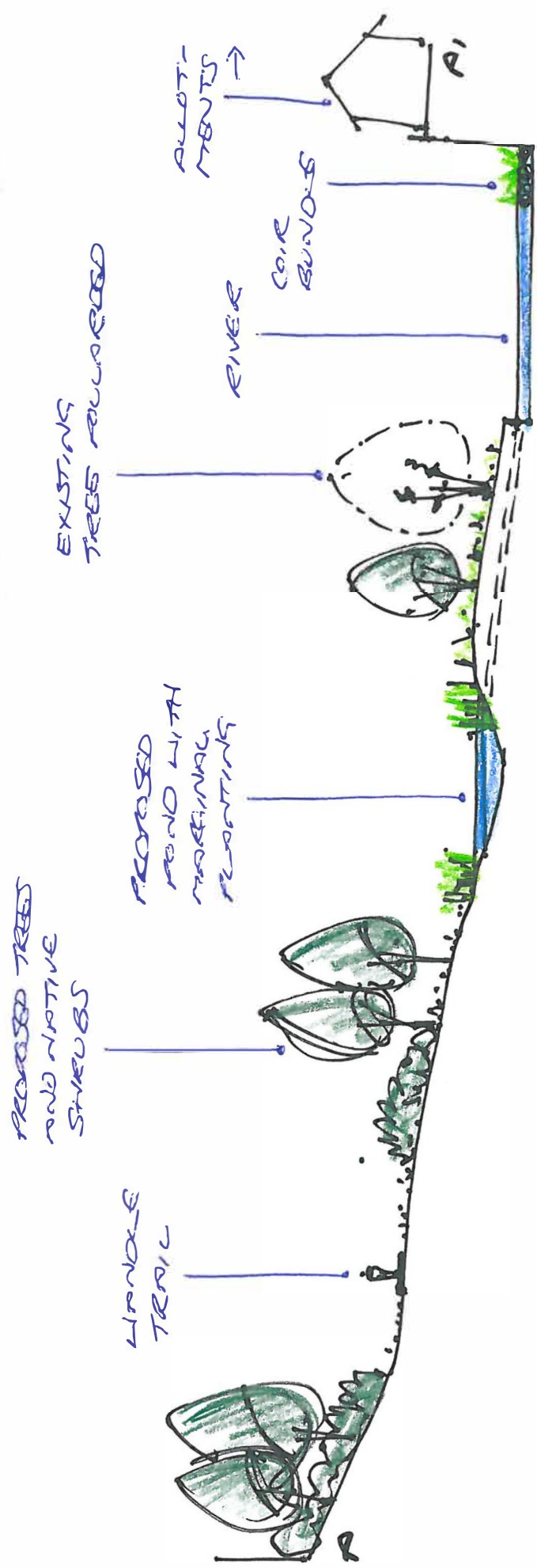


PROPOSED LAYOUT





EXISTING PROFILE



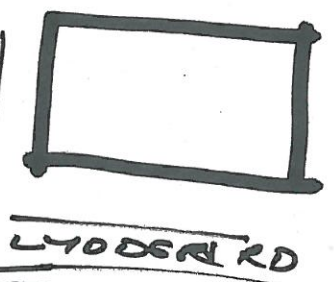
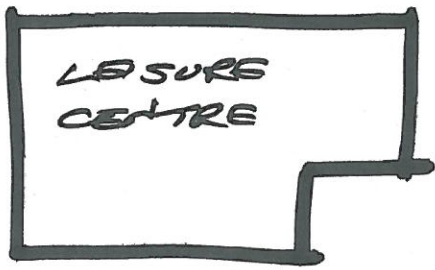
PROPOSED PROFILE

APPENDIX C

KING GEORGES PARK

Existing Layout
Proposal Layout
Sketch Sections

DRAFT



EXISTING VEGETATION
RETAINED

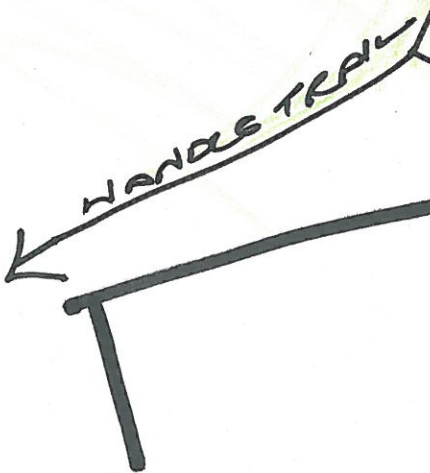
RAILINGS REMOVED

NEW SEATING

CONCRETE
BANK REMOVED
AND BACKWATER
CREATED

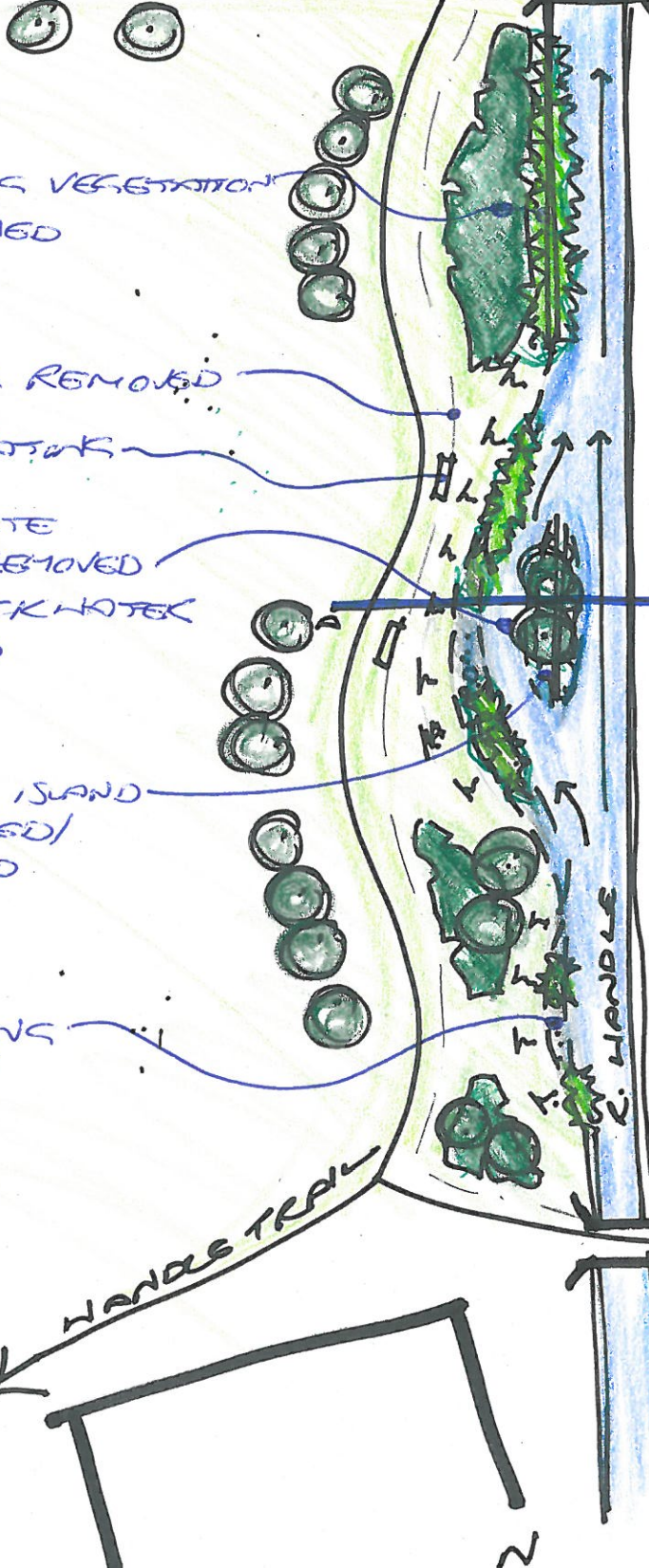
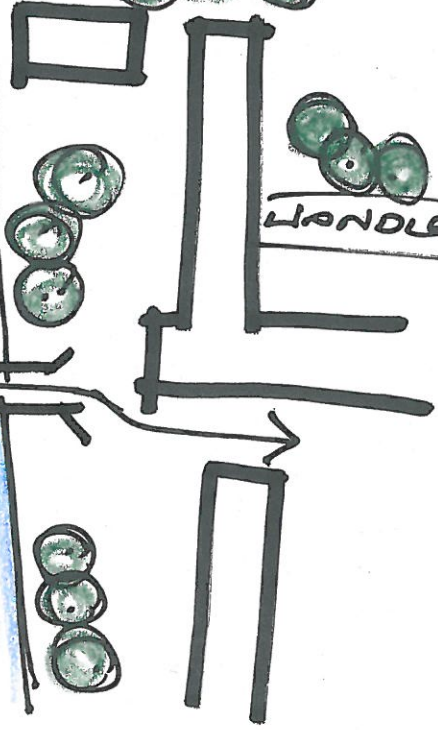
SMALL ISLAND
RETAINED/
CREATED

PLANTING
SHELF

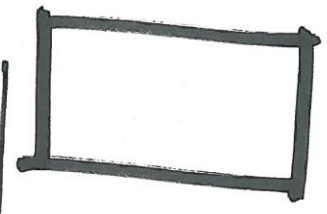


PROPOSED LAYOUT

WANDLE RD.



LEISURE CENTRE



LYDDEN RD

CONCRETE RIVERBANK WITH TRAILING VEGETATION

EXISTING TREES AND VEGETATION

RAILING PREVENTS ACCESS TO RIVER

K. HANDLE

HANDLE RD.

HANDLE TRAIL



EXISTING LAYOUT

