

Rivers and Watercourses

THE PICKLE

UN-NOTICED

UN-WANTED

UN-LOVED

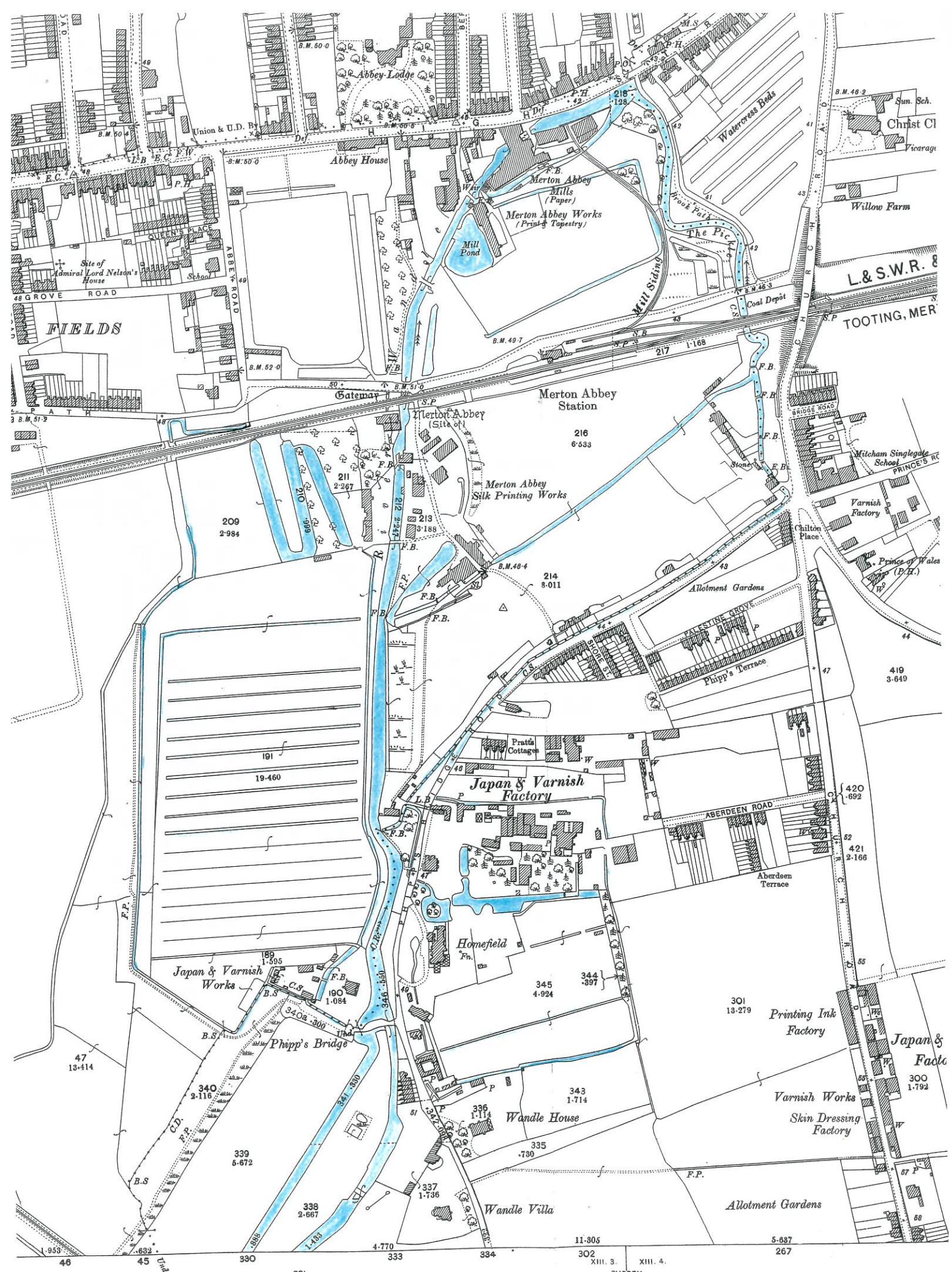
A new bridge over the PICKLE

building a new part of

THE RIVER WANDLE

in 1988

David Luff



OLS FOR BOUNDARIES, &c.

Every parcel is numbered thus	27
Its area is given underneath in Acres, thus	4.370
Braces indicating that the spaces so connected are included in the same reference number and area.	
Brackets indicating that the spaces so connected are included in the same reference number and area.	
For further information see Characteristic Sheet.	

Photocopying and Published by the Director General at the Ordnance Survey Office.
 The Altitudes are given in Feet above the assumed Mean Level of the Sea at Liverpool which is 0.650 of a Foot below
 Altitudes indicated thus (B.M. 54.7) refer to Bench Marks on Buildings, Walls, &c. those marked thus

THE PICKLE

north

The beautiful stream

The Pickle leaves the river Wandle in the Phipps Bridge area and then flows for 913 meters until it rejoins the main river at Merton Bridge.

On leaving the Wandle the bed of the Pickle is 74 inches below the embankment. Measurements taken here in January 2014 made the Pickle some 5 feet below the level of the Wandle.

From here the Wandle flows on for 1016 meters to Merton Bridge where it meets the Pickle on the level.

Leaving the Wandle the Pickle hardly ever exceeds more than a trickle even during periods of very heavy rain. It is soon joined by a drainage ditch coming off the housing estate to the right.

This channel usually has a steady flow of water. I am not sure where the water comes from but old maps show a channel here being fed from the Wandle much further to the south.

It then disappears underground in the 356 meter culvert. Emerging under the concrete apron in the rear of 101 Runnymede before being joined by Bennett's Ditch. This channel provides most of the water in the Pickle and once again it goes underground in the cut and cover tunnel under Meratun Way.

This time it emerges into the pastoral area of the Priory Park shopping complex. A few more twist and turns and meets the Wandle once more.

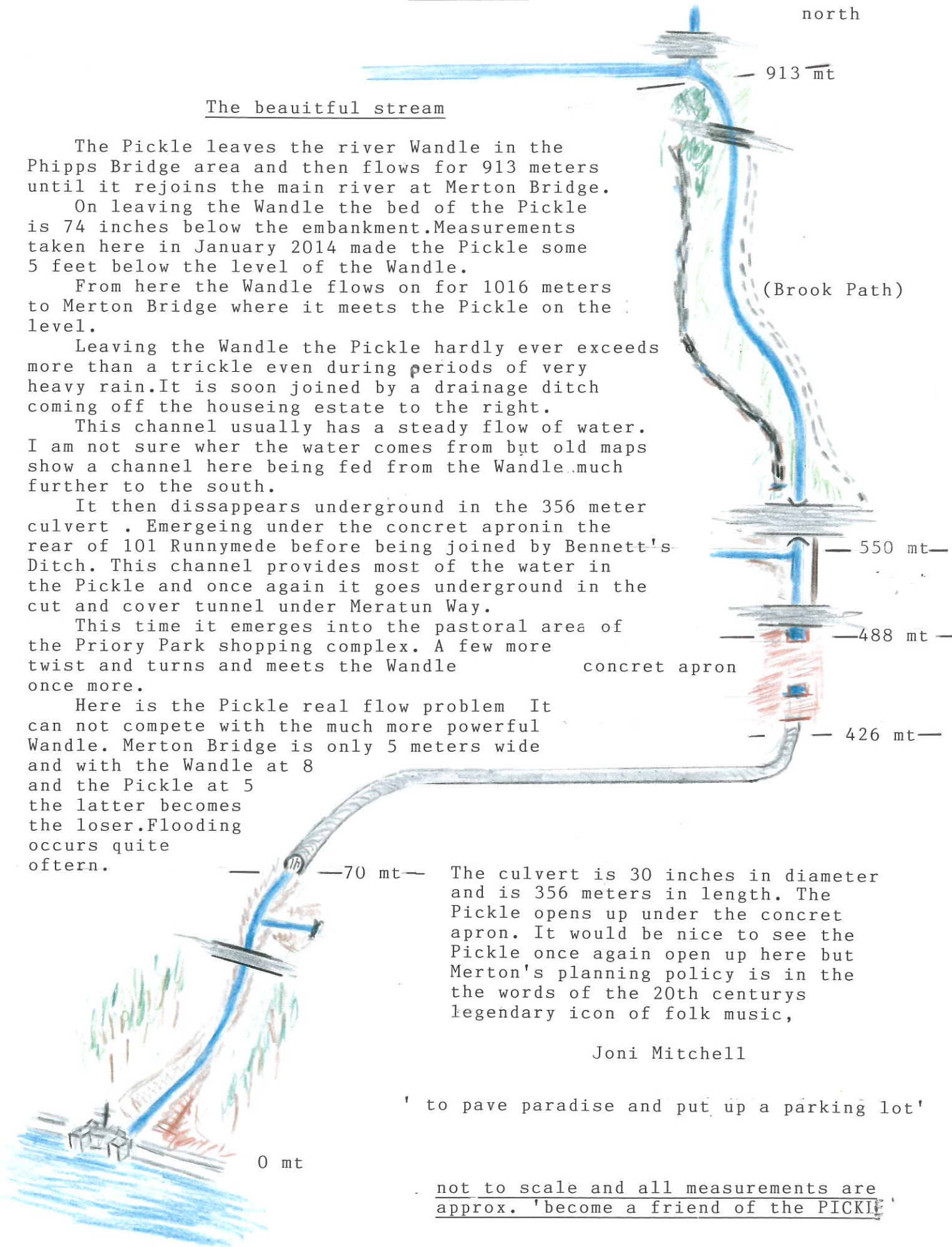
Here is the Pickle real flow problem. It can not compete with the much more powerful Wandle. Merton Bridge is only 5 meters wide and with the Wandle at 8 and the Pickle at 5 the latter becomes the loser. Flooding occurs quite often.

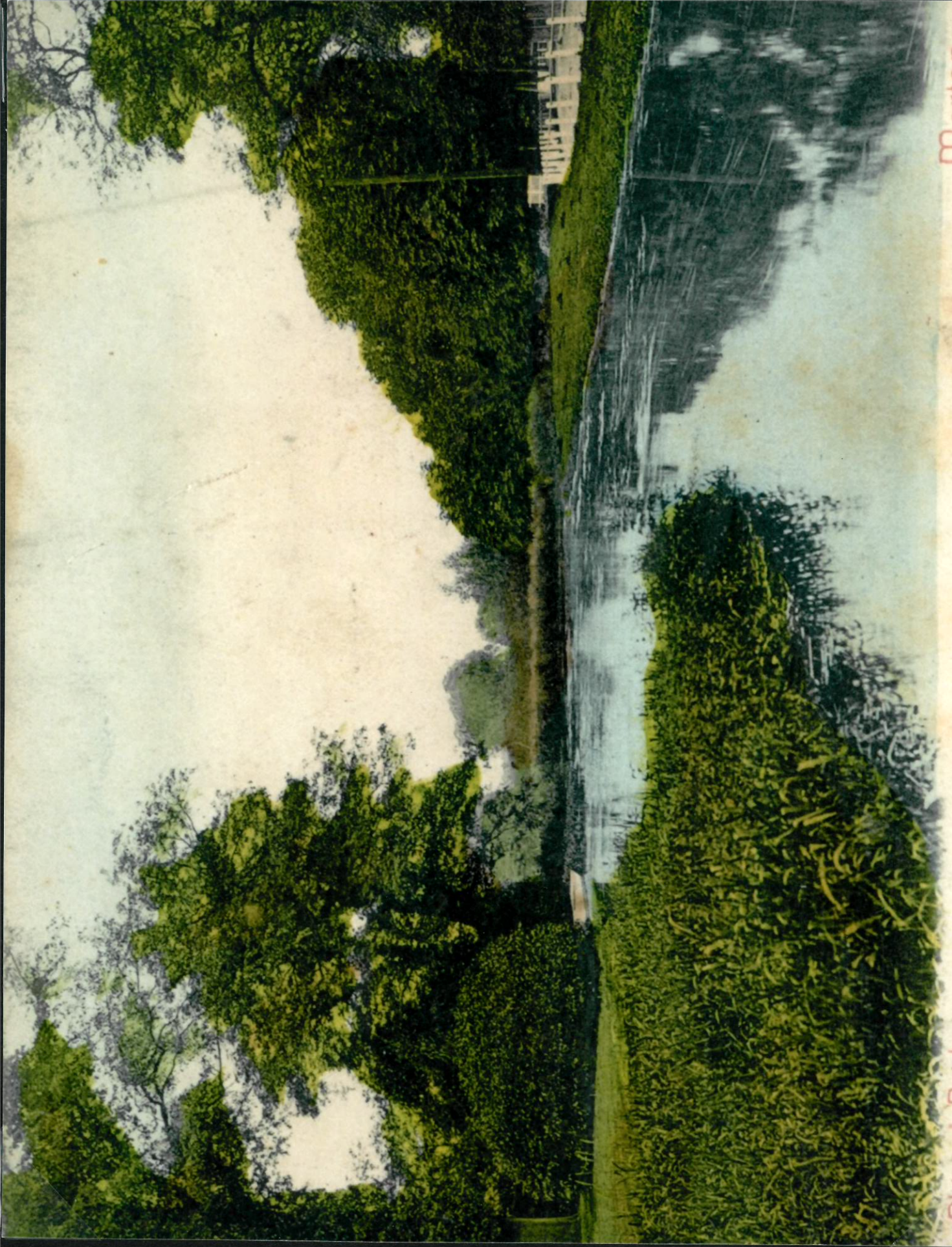
The culvert is 30 inches in diameter and is 356 meters in length. The Pickle opens up under the concrete apron. It would be nice to see the Pickle once again open up here but Merton's planning policy is in the words of the 20th century's legendary icon of folk music,

Joni Mitchell

'to pave paradise and put up a parking lot'

not to scale and all measurements are approx. 'become a friend of the PICKLE'

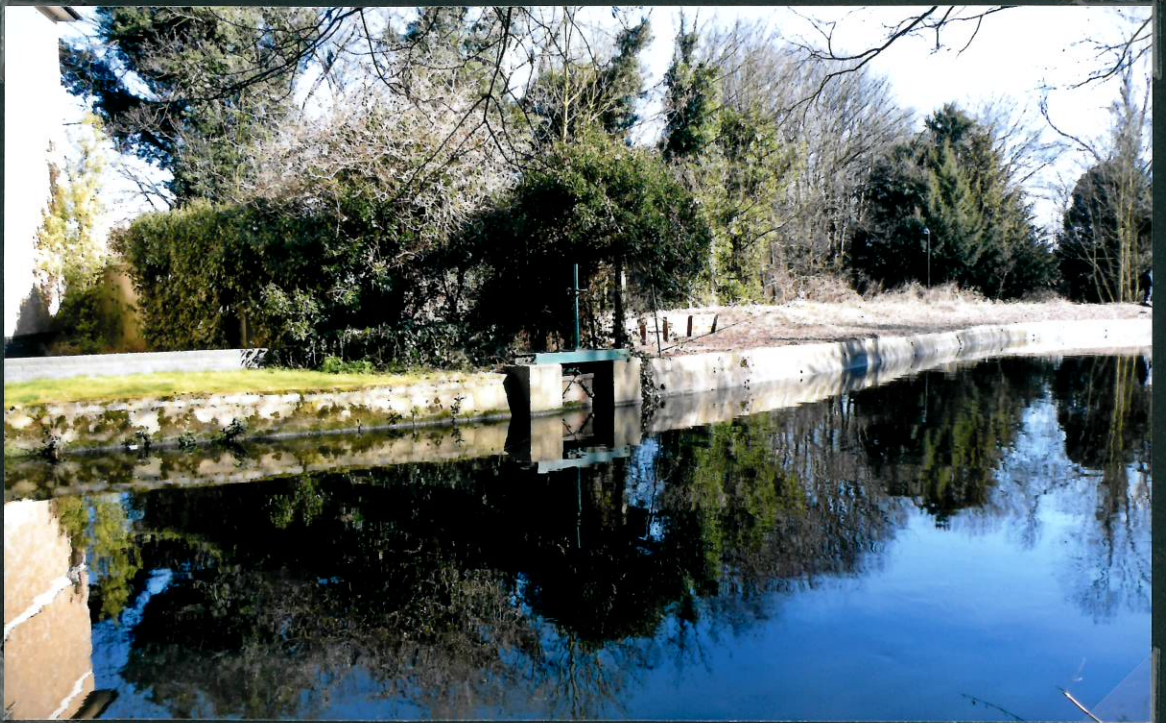




Phipps' Bridge,

Merton.











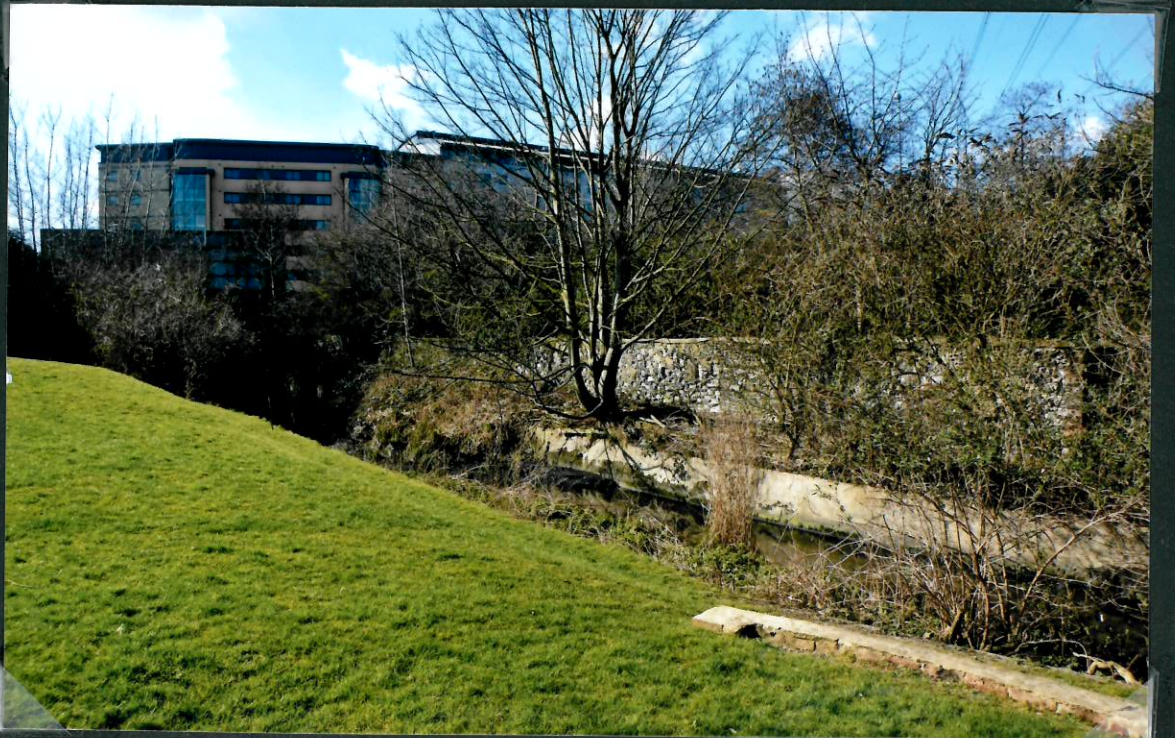
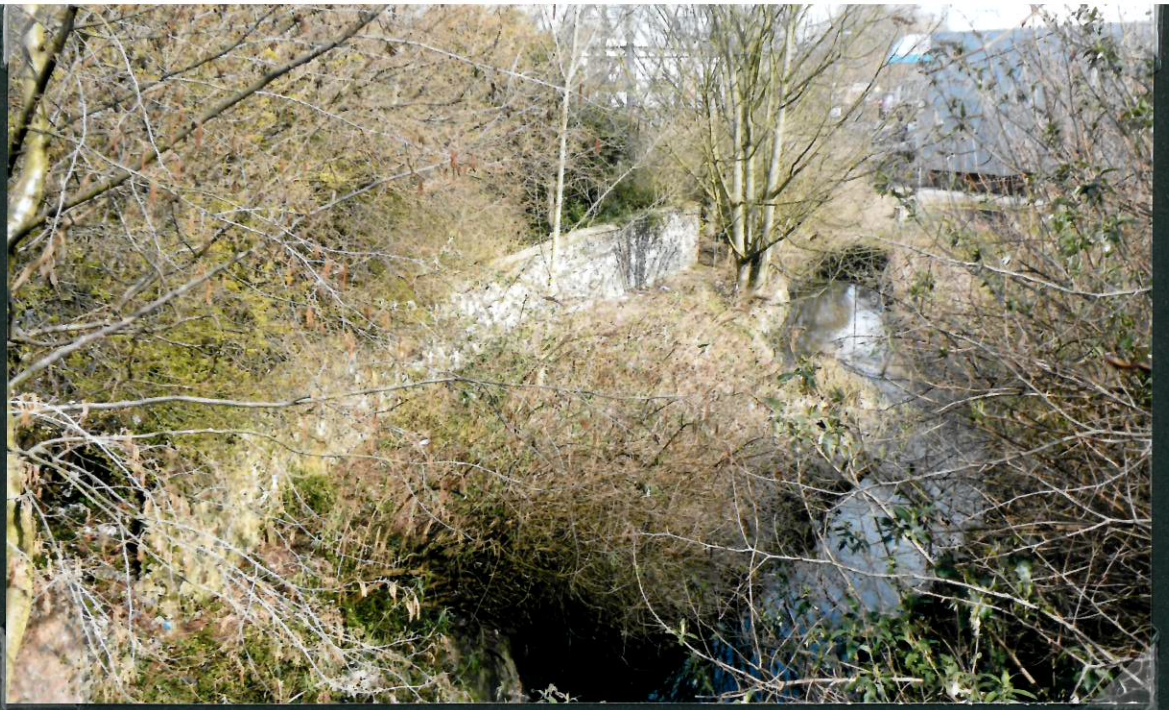


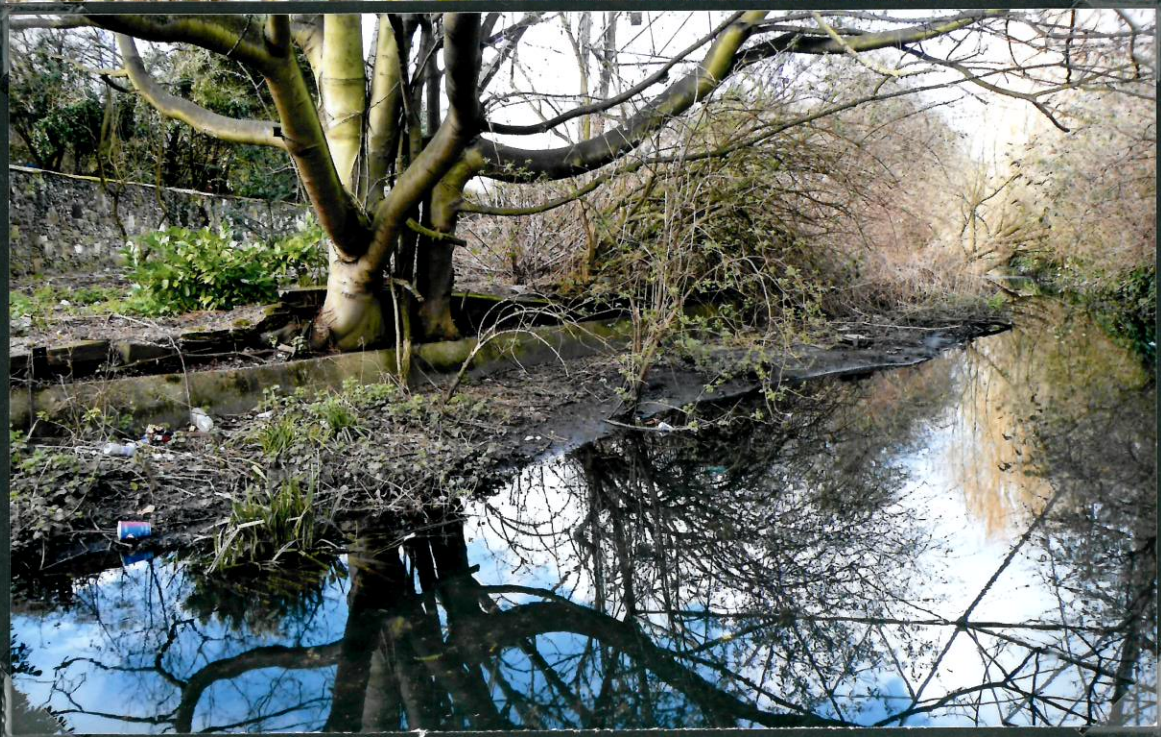
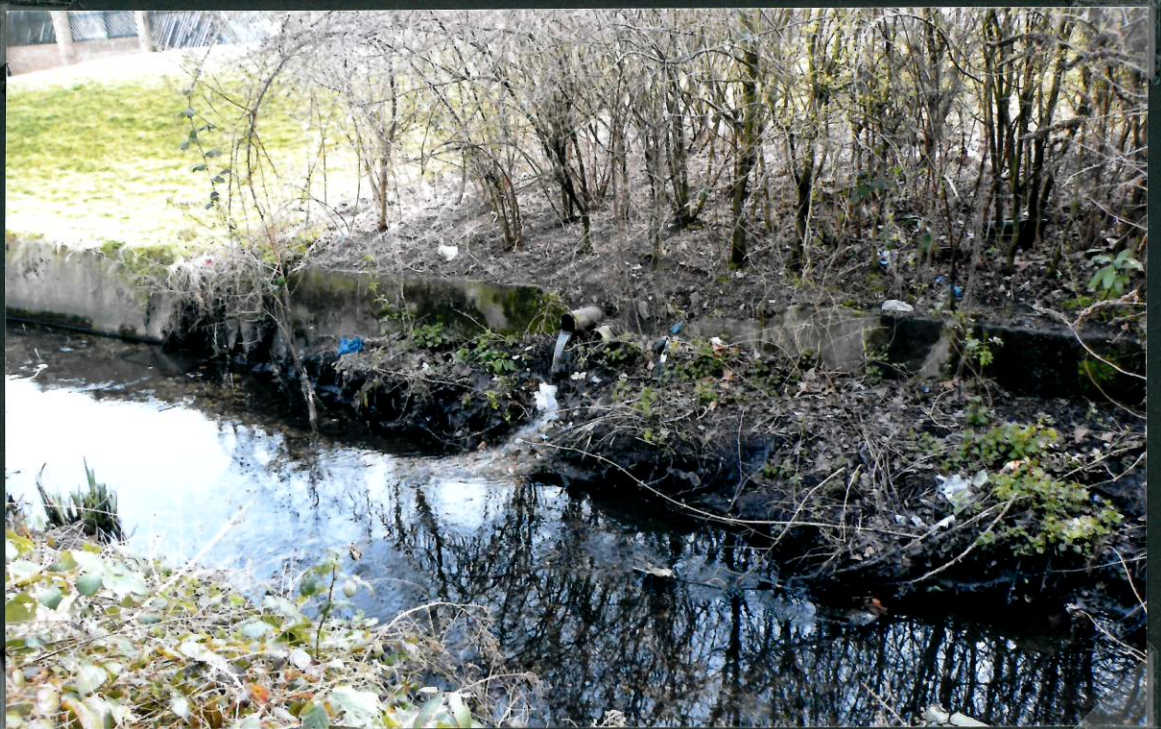


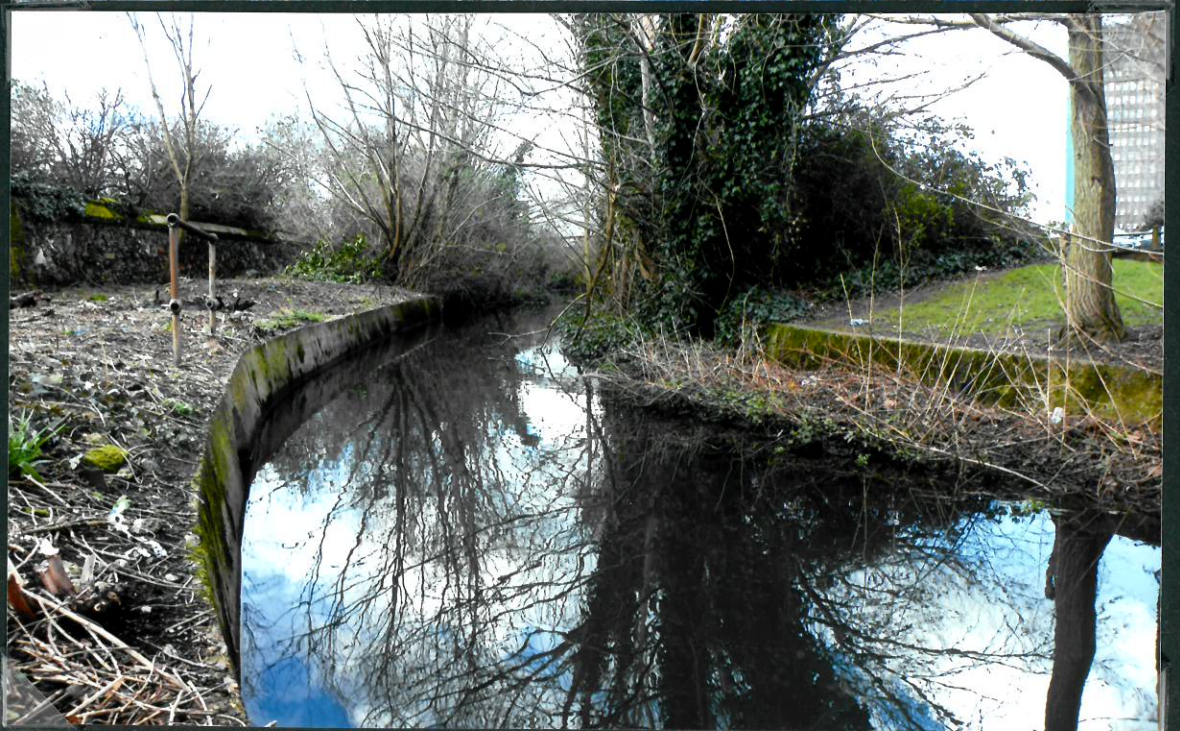












The historical 'PICKLE'

*Conjectural plan of the precinct at the Dissolution.
(with the outlines of the later Abbey House and
Gatehouse and its neighbours shaded)*

